

DETROIT DIESEL



GENUINE PARTS

UIN 05C5D98

Transmission

Unit No. MC9T52379

Unit:
Make
Model
Serial No.
Site David Matson Walnut CA

Compartment:
Name Transmission
Make Allison
Model
Serial No.
Capacity:

Customer:
PACIFIC POWER PRODUCTS
PO Box 730
Redmond OR 97756
USA

DIAGNOSIS

All wear levels appear within acceptable limits for first sample. Silicon level (dirt/sealant material) satisfactory. Water content acceptable. Viscosity within specified operating range.

Action: Resample at next recommended interval to monitor and establish wear trend.

ANALYST: Sam Smith Portland

LEGEND				
Normal	Severe	Abnormal	Caution	Normal

1-800-DDC-0952

DATE SAMPLED	30-Mar-17
DATE RECEIVED	05-Apr-17
DATE REPORTED	05-Apr-17

LAB NO.	40110716321
SIF NO.	32048974
TIME ON UNIT	
TIME ON OIL	
OIL BRAND	Unidentified
OIL TYPE	ATF
OIL GRADE	-
OIL ADDED	
FILTER	Not Applicable
OIL CHANGED	
WO NUMBER	

Metals (ppm)	
Iron (Fe)	16
Chromium (Cr)	<1
Lead (Pb)	3
Copper (Cu)	26
Tin (Sn)	2
Aluminium (Al)	4
Nickel (Ni)	<1
Silver (Ag)	<1
Titanium (Ti)	<1
Vanadium (V)	<1

Contaminants (ppm)	
Silicon (Si)	4
Sodium (Na)	3
Potassium (K)	1
Water (%)	<0.05

Additives (ppm)	
Magnesium (Mg)	1
Calcium (Ca)	75
Barium (Ba)	<1
Phosphorus (P)	201
Zinc (Zn)	27
Molybdenum (Mo)	<1
Boron (B)	49

Physical Tests	
Viscosity (cSt 100C)	6.0
Solids (%)	<0.1



UIN 05C5D98

U.S. Laboratories

Atlanta, Georgia - 420

3121 Presidential Drive
Atlanta, GA 30340
800.394.3669

Valley View, Ohio - 410

6180 Halle Dr, Suite D
Valley View, OH 44125
800.726.5400

Kansas City, Kansas - 430

935 Sunshine Road
Kansas City, KS 66115
800.332.8055

Phoenix, Arizona - 440

3319 West Earl Drive
Phoenix, AZ 85017
800.445.7930

Portland, Oregon - 401

4943 NW Front Avenue
Portland, OR 97210
800.770.4128

Sparks, Nevada - 400

1375 Greg Street, Suite 104
Sparks, NV 89431
800.524.7848

Canadian Laboratories

Burlington, Ontario - 450

1240 Burloak Drive, Unit 6
Burlington, ON L7L 6B3
877.732.9559

Edmonton, Alberta - 402

10717-176 Street
Edmonton, AB T5S 1K1
888.489.0057

Sales & Marketing

Houston, Texas

10450 Stanciff Road, Suite 210
Houston, TX 77099
877.835.8437

International Locations

Australia

Brisbane, Perth, Sydney,
Muswellbrook

Europe

Prague

New Zealand

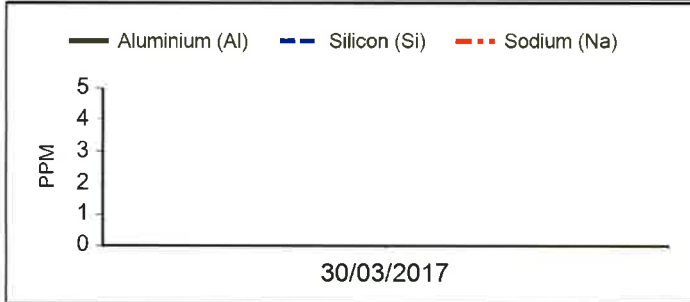
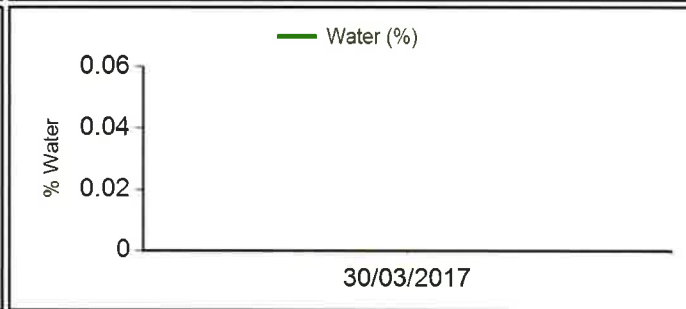
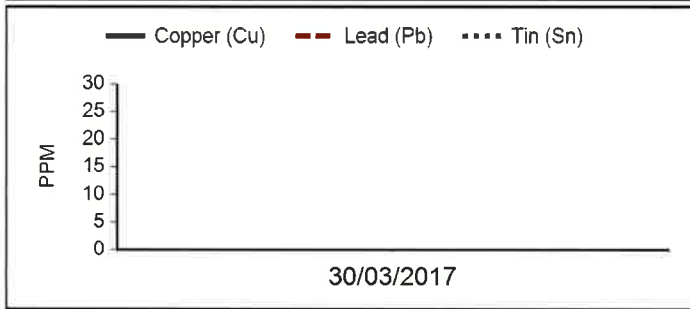
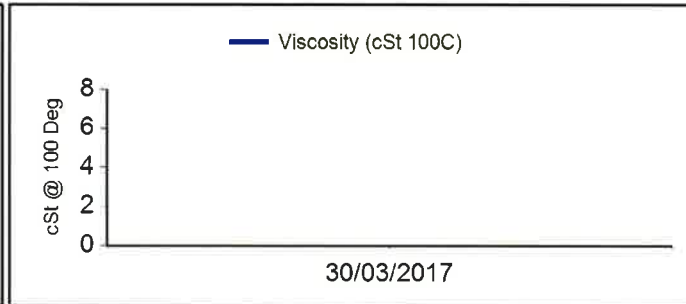
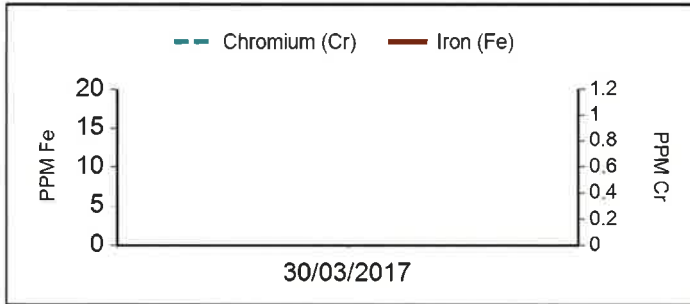
Wellington

South America

Santiago de Chile

Southeast Asia

Kuala Lumpur, Singapore



Filter Image

Filter patch test is not performed Contact laboratory for more information

Since services are based on samples and information supplied by others, and since corrective actions, if any, are necessarily taken by others, these services are rendered without any warranty or liability of any kind beyond the actual amount paid to ALS Tribology for the services. Reported recommendations are based on interpretations of the generated test results and historical data. Certain test results appearing in this report may have been tested at other ALS laboratories within the Tribology divisional network.

Pacific Power Products
Attn: Selena Frederick
PO Box 730
Redmond OR 97756
USA



GENUINE PARTS

UIN 05C5D95

Diesel Engine

Unit No. MC9T52379

Unit:
Make
Model
Serial No.
Site David Matson Walnut CA

Compartment:
Name Diesel Engine
Make Detroit Diesel
Model 6V71
Serial No.
Capacity:

Customer:
 PACIFIC POWER PRODUCTS
 PO Box 730
 Redmond OR 97756
 USA

DIAGNOSIS

Wear metal{s} high-indicating possible cylinder wear and piston scuffing. Silicon level (dirt/sealant material) satisfactory. Water content acceptable. Fuel dilution satisfactory. Viscosity within specified operating range.

Action: Resample at next recommended interval to monitor and establish wear trend.

DATE SAMPLED	30-Mar-17
DATE RECEIVED	05-Apr-17
DATE REPORTED	05-Apr-17

LAB NO.	40110716320
SIF NO.	32048973
TIME ON UNIT	
TIME ON OIL	10000
OIL BRAND	Chevron
OIL TYPE	Delo 100
OIL GRADE	SAE 40
OIL ADDED	
FILTER	
OIL CHANGED	
WO NUMBER	

Metals (ppm)

Iron (Fe)	100
Chromium (Cr)	2
Lead (Pb)	6
Copper (Cu)	16
Tin (Sn)	19
Aluminium (Al)	6
Nickel (Ni)	<1
Silver (Ag)	2
Titanium (Ti)	<1
Vanadium (V)	<1

Contaminants (ppm)

Silicon (Si)	14
Sodium (Na)	21
Potassium (K)	5
Water (%)	<0.05
Coolant	No

Additives (ppm)

Magnesium (Mg)	209
Calcium (Ca)	2381
Barium (Ba)	<1
Phosphorus (P)	1055
Zinc (Zn)	1329
Molybdenum (Mo)	75
Boron (B)	182

Physical Tests

Viscosity (cSt 100C)	14.2
Fuel (%)	<1
Soot (%) Infrared	0.1



ANALYST: Stan.Leitz

LEGEND				
Caution	Severe	Abnormal	Caution	Normal

1-800-DDC-0952

Atlanta, Georgia - 420

3121 Presidential Drive
Atlanta, GA 30340
800.394.3669

Valley View, Ohio - 410

6180 Halle Dr, Suite D
Valley View, OH 44125
800.726.5400

Kansas City, Kansas - 430

935 Sunshine Road
Kansas City, KS 66115
800.332.8055

Phoenix, Arizona - 440

3319 West Earle Drive
Phoenix, AZ 85017
800.445.7930

Portland, Oregon - 401

4943 NW Front Avenue
Portland, OR 97210
800.770.4128

Sparks, Nevada - 400

1375 Greg Street, Suite 104
Sparks, NV 89431
800.524.7848

Canadian Laboratories

Burlington, Ontario - 450

1240 Burloak Drive, Unit 6
Burlington, ON L7L 6B3
877.732.9559

Edmonton, Alberta - 402

10717-176 Street
Edmonton, AB T5S 1K1
888.489.0057

Sales & Marketing

Houston, Texas

10450 Stancliff Road, Suite 210
Houston, TX 77099
877.835.8437

International Locations

Australia

Brisbane, Perth, Sydney,
Muswellbrook

Europe

Prague

New Zealand

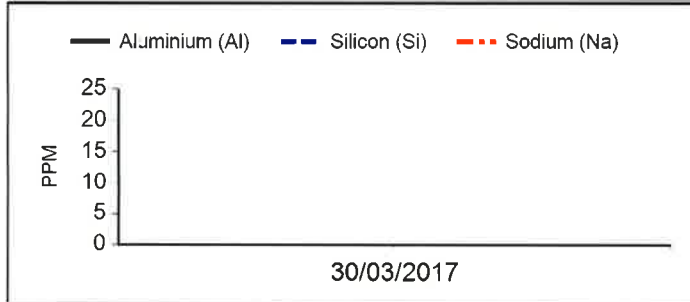
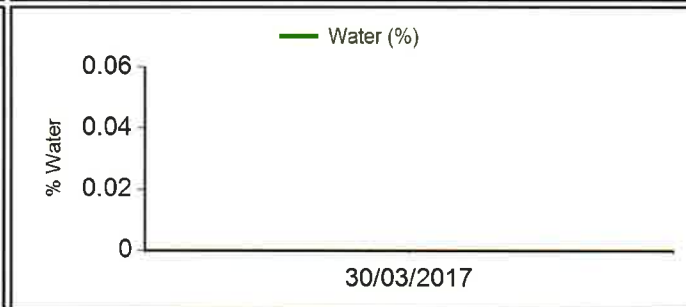
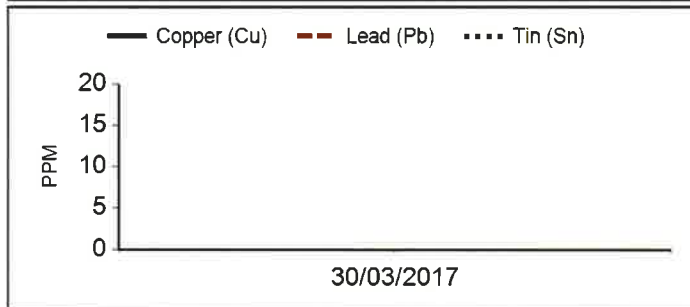
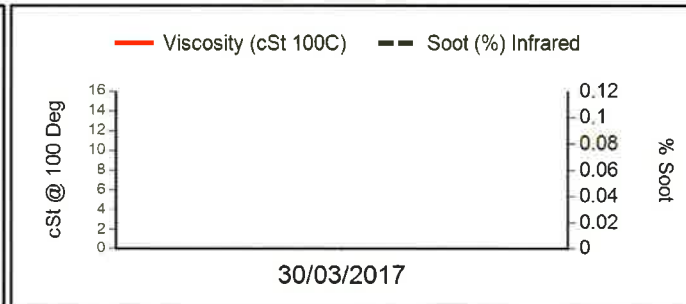
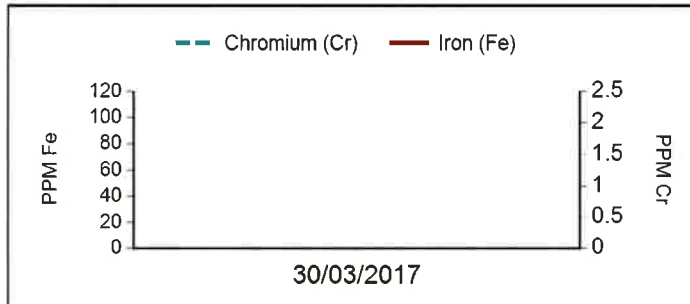
Wellington

South America

Santiago de Chile

Southeast Asia

Kuala Lumpur, Singapore



Filter Image

Filter patch test is not performed Contact laboratory for more information

Since services are based on samples and information supplied by others, and since corrective actions, if any, are necessarily taken by others, these services are rendered without any warranty or liability of any kind beyond the actual amount paid to ALS Tribology for the services. Reported recommendations are based on interpretations of the generated test results and historical data. Certain test results appearing in this report may have been tested at other ALS laboratories within the Tribology divisional network.

Pacific Power Products
Attn: Selena Frederick
PO Box 730
Redmond OR 97756
USA